

# Safety and Certification of Discontinuous Fiber Composite Structures

Marco Salviato, Jinkyu Yang, Mark Tuttle

University of Washington

Seattle, November 8<sup>th</sup> 2017

# Research team

---

**PIs:** Mark Tuttle (UW-ME), Jinkyu Yang (UW-AA), Marco Salviato (UW-AA)

**FAA Technical Monitor:** Ahmet Oztekin

**Industry Monitors:** William Avery (Boeing)

**Students:**

**Graduate:** Seunghyun Ko (PhD), Reda El Mamoune (UW-MSE, now @ Hexcel)  
Reed Hawkins (UW-AA), Rohith Jayaram (UW-AA)

**Undergraduate:** Minh Nguyen (UW-AA), Kenrick Chan (UW-AA), Cristopher Lynch (UW-AA), Natania Stokes (UW-AA), Nicolay Pekhotin (UW-AA), Daniel Wu (UW-ME)



# Motivation



Source: [www.hexcel.com](http://www.hexcel.com)

- **Almost net-shape design of complex parts;**
- **Significant increase in volumes of production;**
- **Interesting mechanical properties;**

## Lamborghini Huracan



Source: [www.lamborghini.com](http://www.lamborghini.com)



Source: [www.toyota.com](http://www.toyota.com)

# Motivation

---



**Lamborghini Urus**

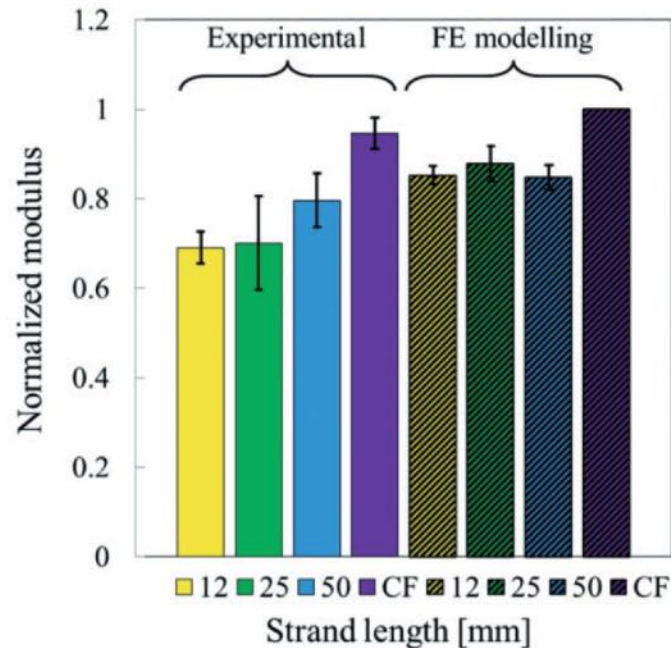


# Motivation

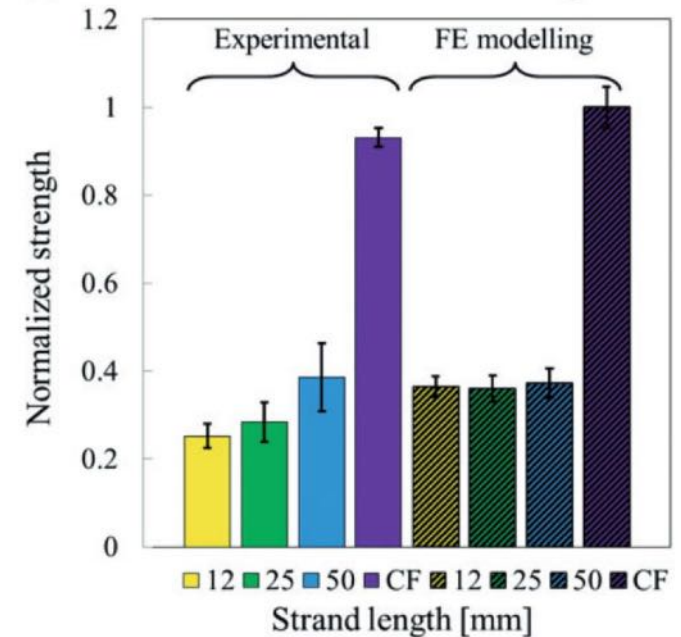
Because the size of the main heterogeneities is significant compared to the one of typical DFC components, the mechanical behavior is strongly affected by the material mesostructure.



## Elastic modulus

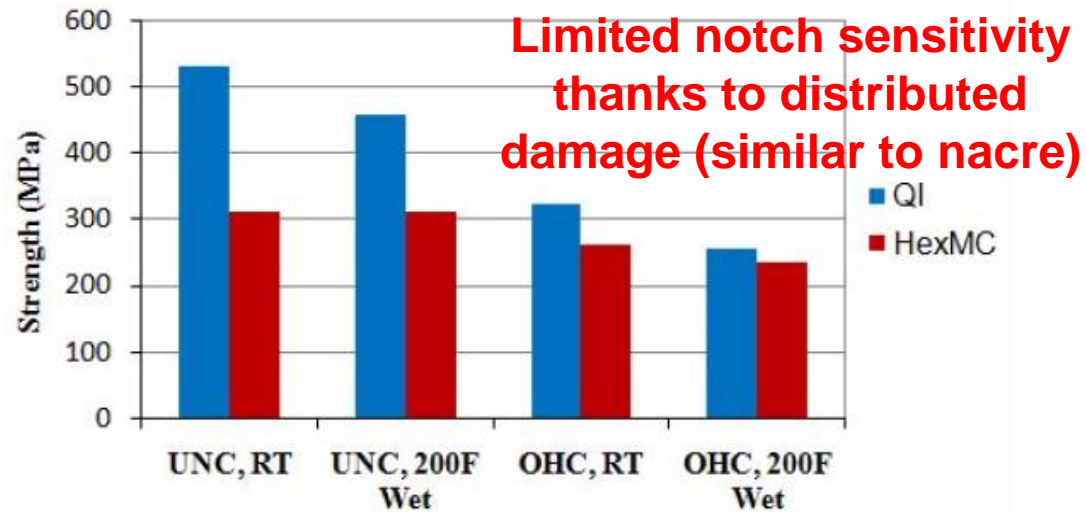
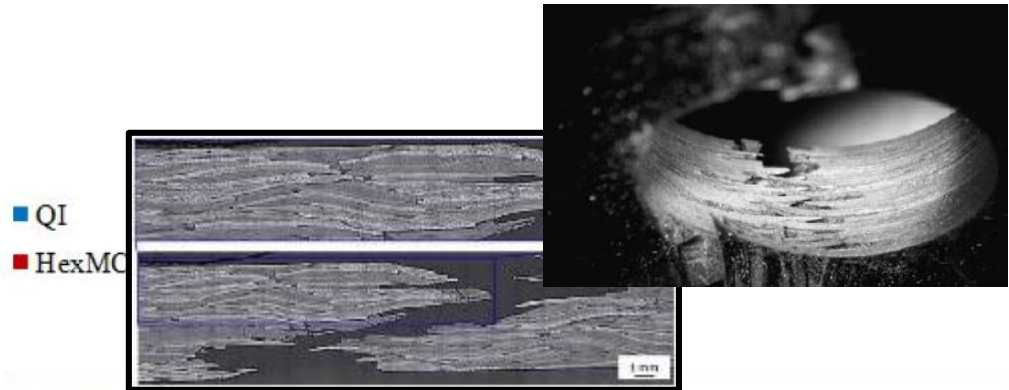
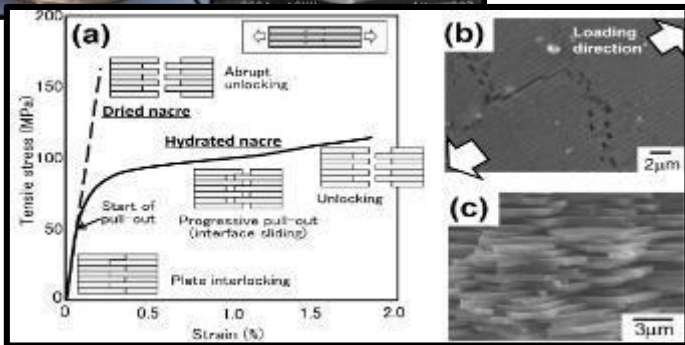
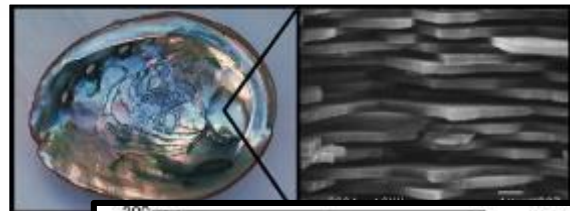
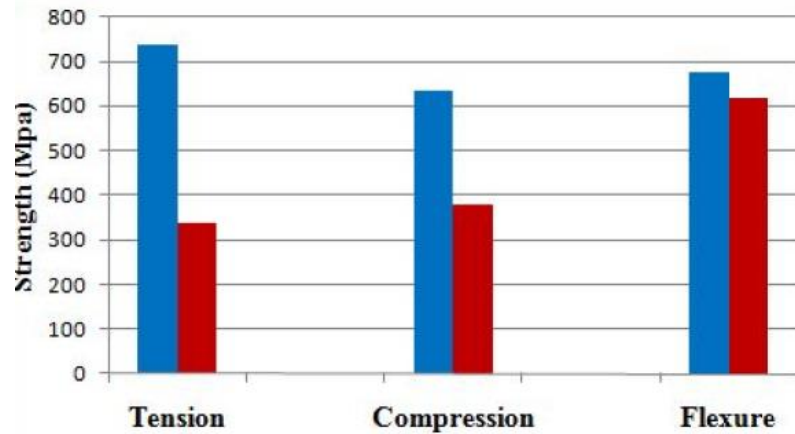


## Strength



# Motivation

However, the complex mesostructure enables large damage progression and fracture energy dissipation.



# Motivation

---

Damage tolerance is a highly desirable property!



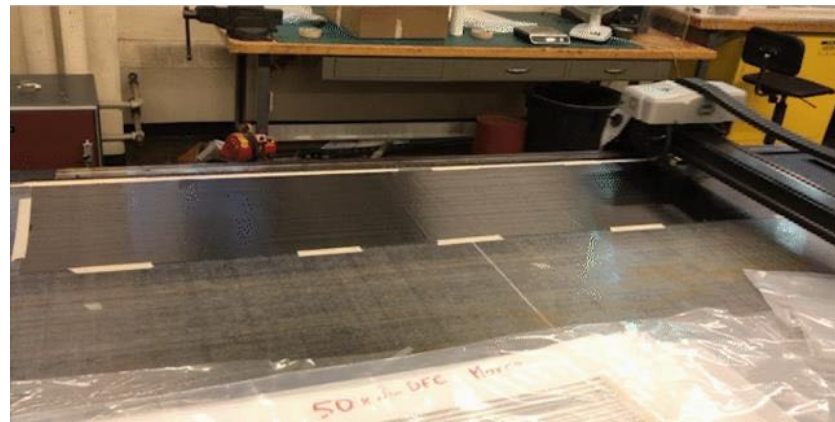
# Objectives

---

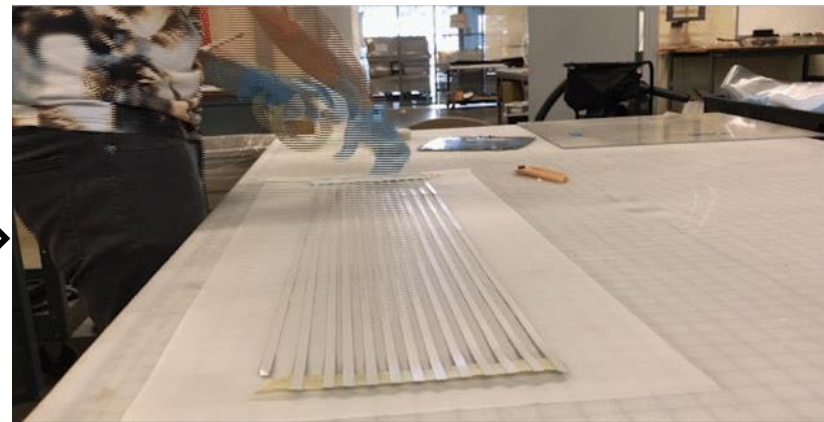
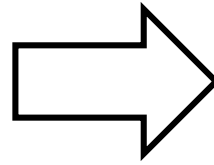
- Investigate the main mechanisms of damage progression and fracture in the presence of notches and defects;
- Clarify the role played by the platelet morphology and the mesostructure on the fracturing behavior;
- Develop guidelines for the experimental characterization of the fracturing behavior and for the design in the presence of stress risers;
- Clarify the role of *defects* such as dents and intralaminar cracks and provide guidelines for nondestructive evaluation
- Ultimately, the objective of this AMTAS project is to help ease the path to certification of DFC parts of aerospace structural parts.



# Methodology: DFC manufacturing with controlled platelet size



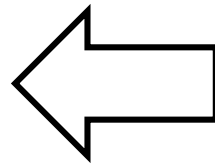
Prepreg sheets are cut into combs using CNC machine



Backing tape is peeled



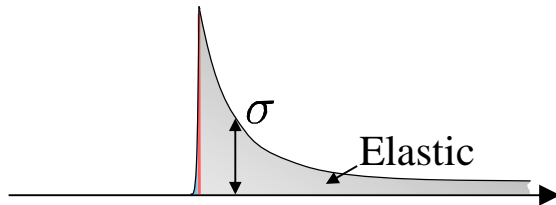
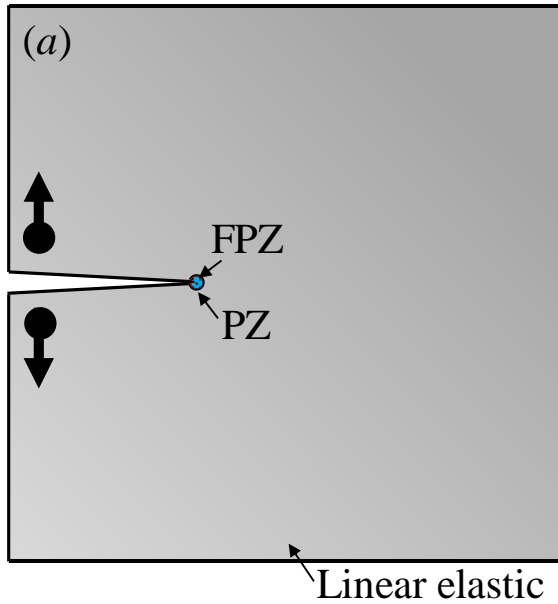
Chips are randomly distributed to form bulk material, ready for the hot-press



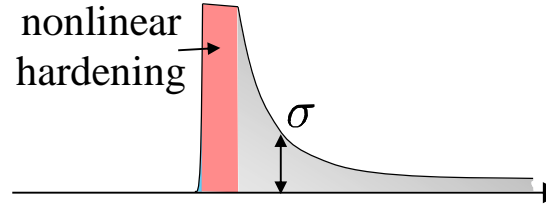
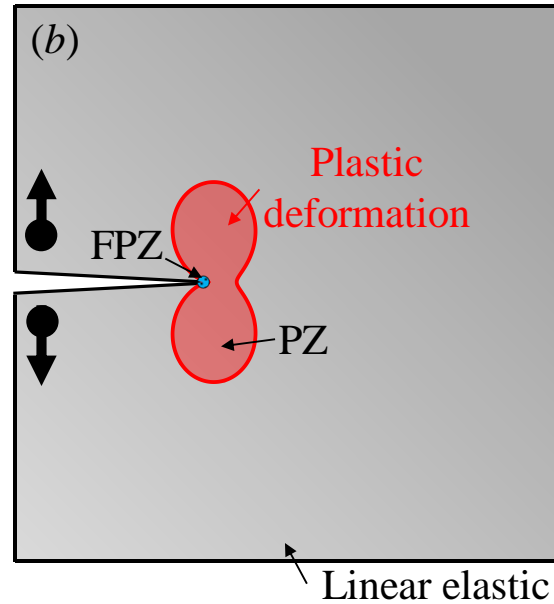
Cut across the combs to make chips in desired dimensions

# Methodology: Size effect test

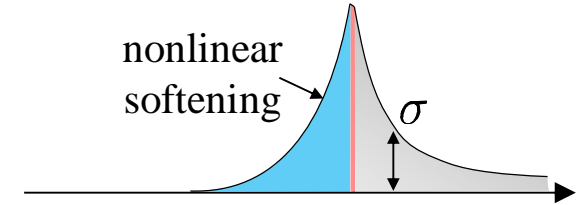
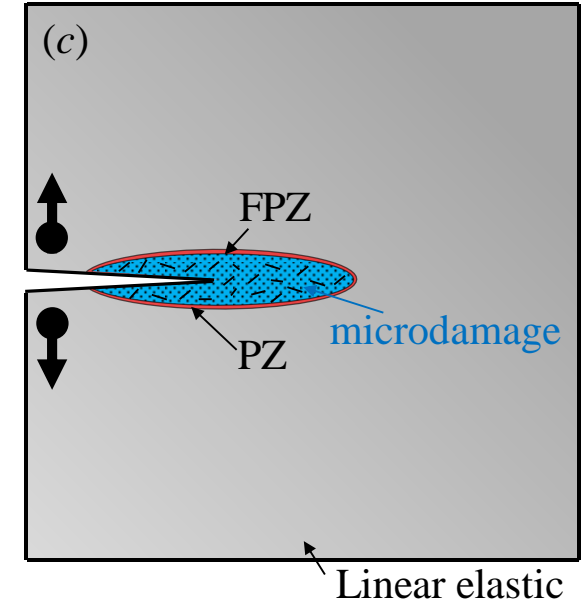
## Brittle



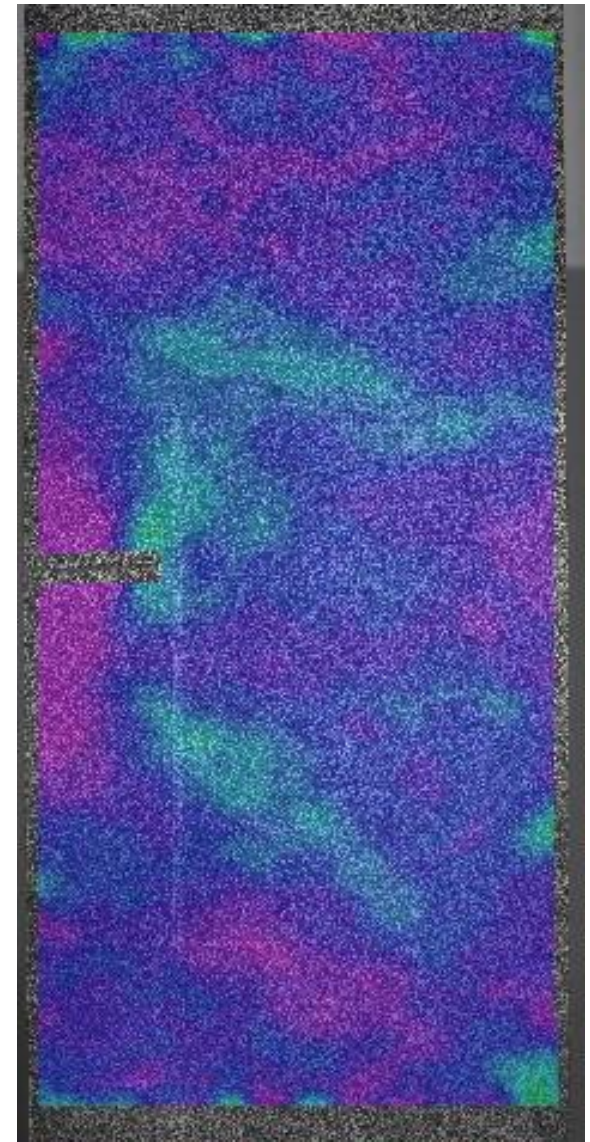
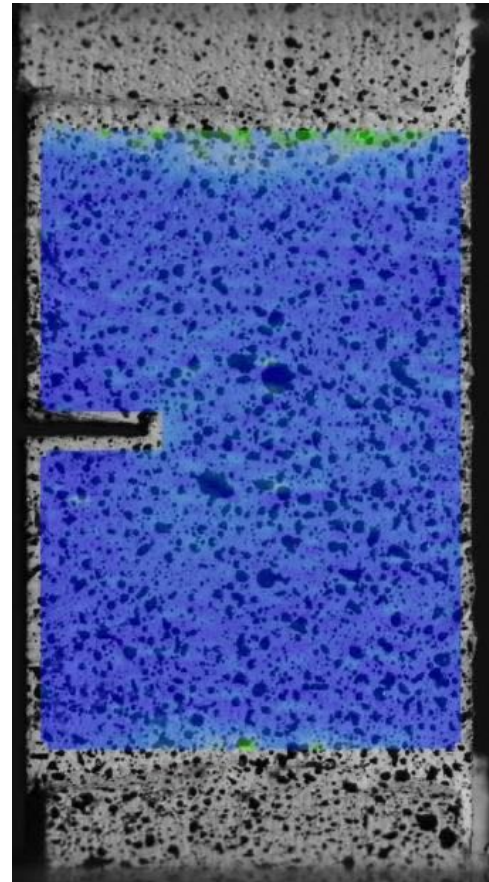
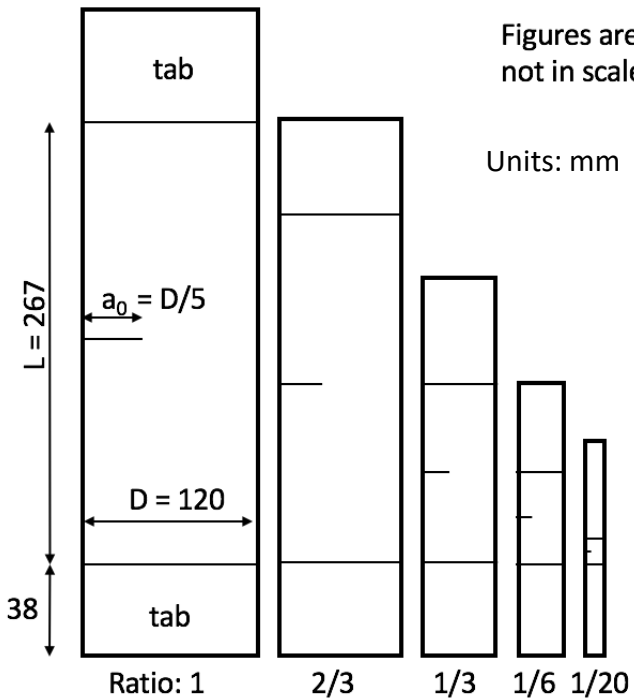
## Ductile



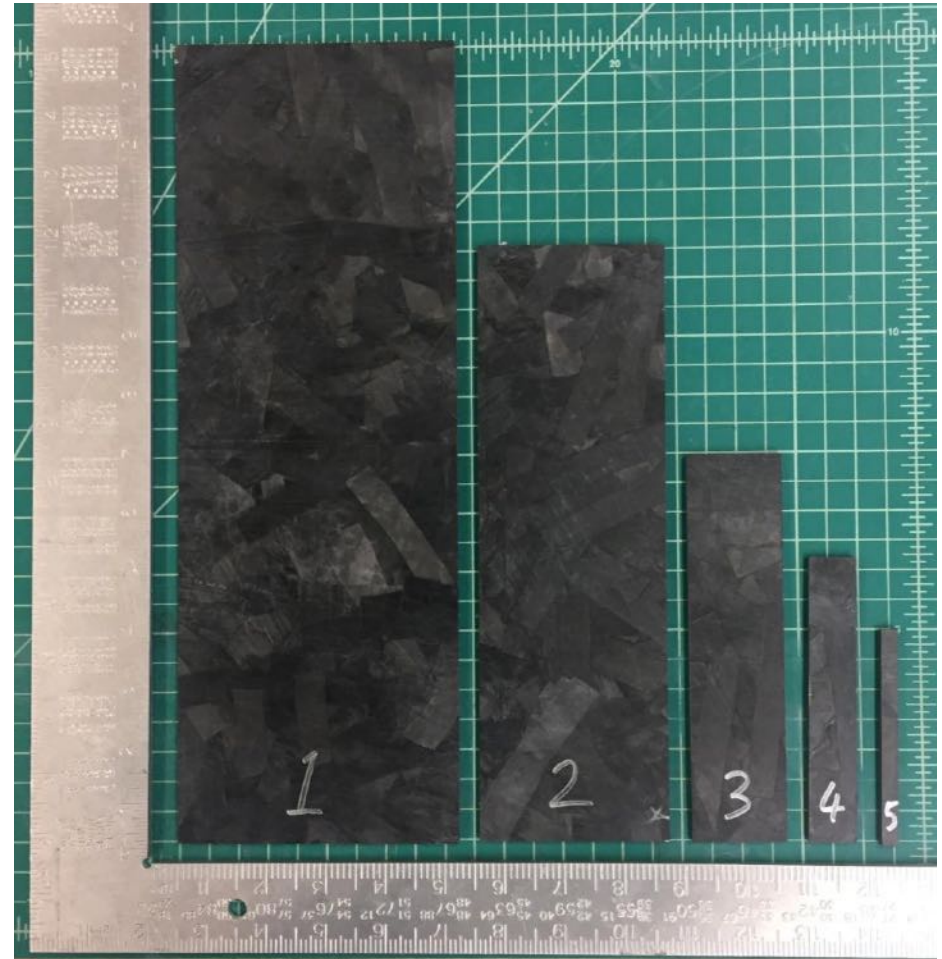
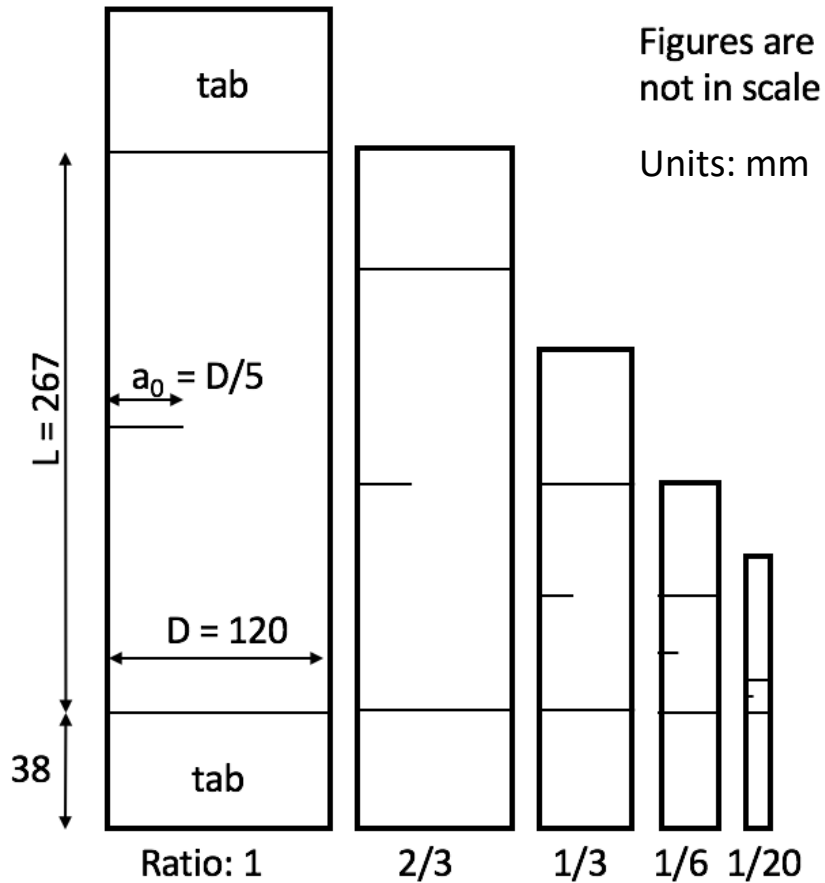
## Quasibrittle



# Methodology: Size effect test



# Methodology: Size effect test



# Test plan

---

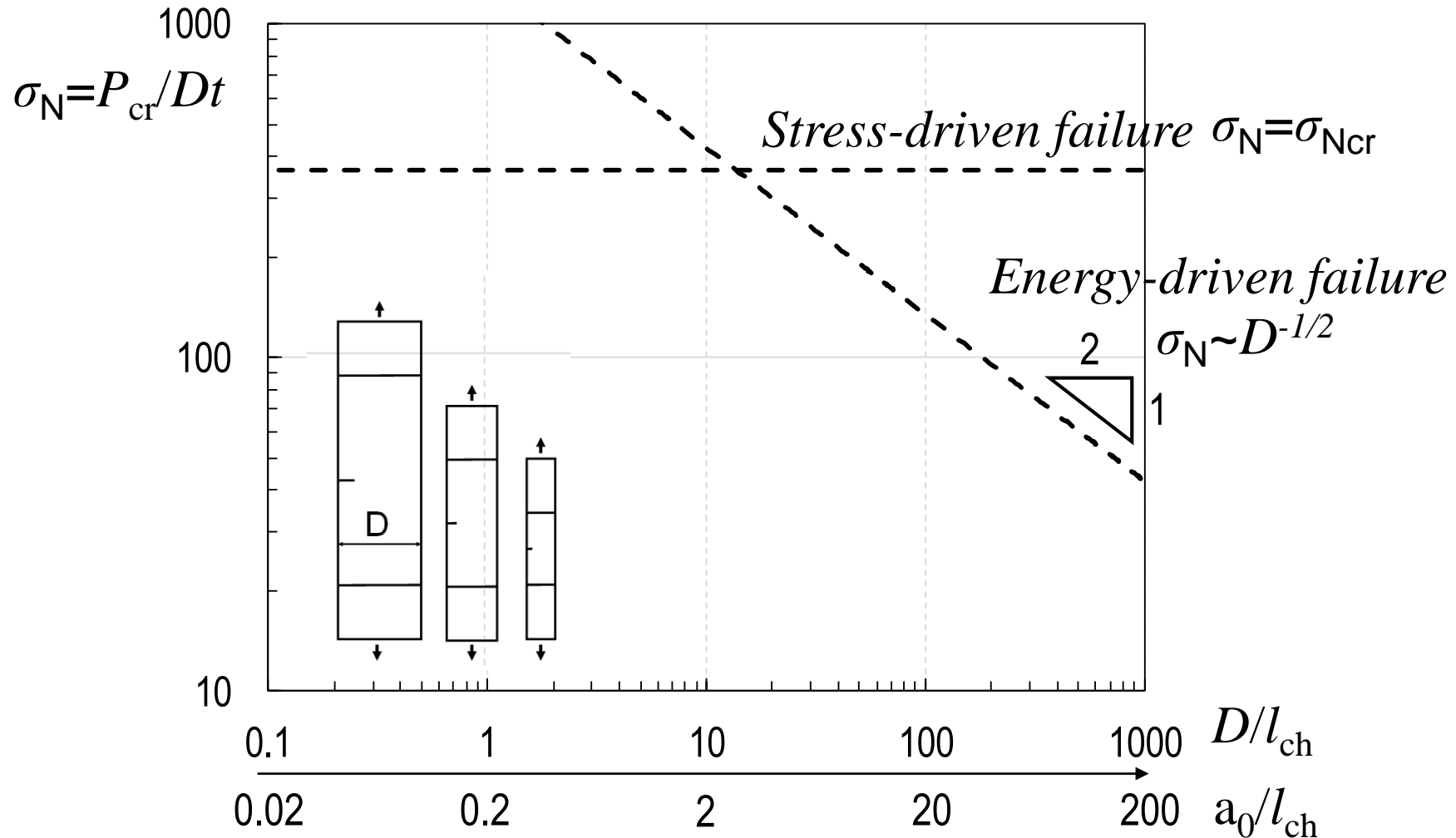
## Chip size effect test:

<b>Chip size variables</b>	<b>75x12, 50x8, 25x4 (mm)</b>
Fixed thickness	3 (mm)
Coupon size variables	343 x 120, 254 x 80, 165 x 40, 120.5 x 20, 90 x 6.3 (mm)
Number of coupons in each variables	6
Total number of coupons	90

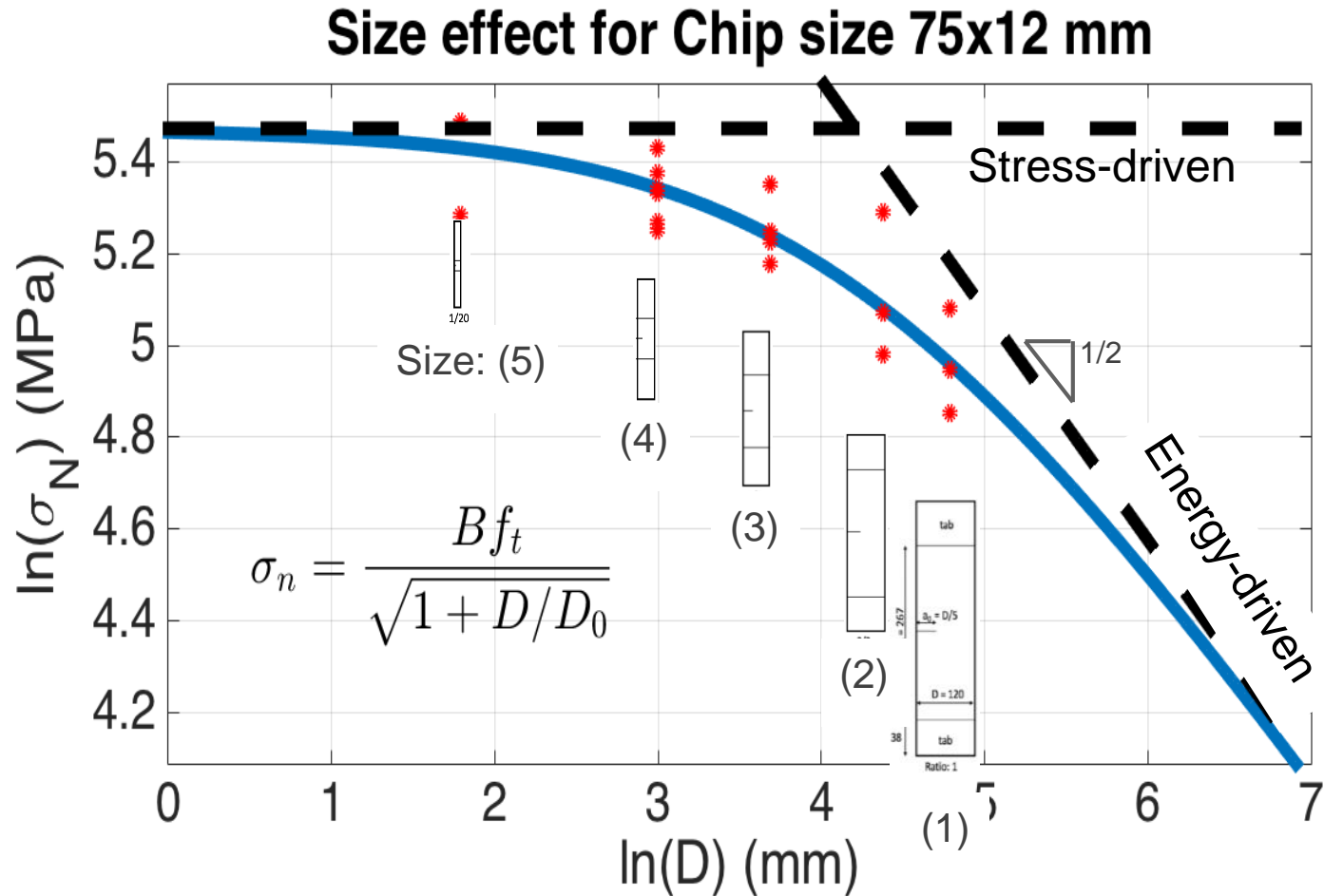
## Thickness effect test:

<b>Thickness variables</b>	<b>1, 2, 4 (mm)</b>
Fixed chip size	50 x 8 (mm)
Coupon size variables	343 x 120, 254 x 80, 165 x 40, 120.5 x 20, 90 x 6.3 (mm)
Number of coupons in each variables	6
Total number of coupons	90

# Preliminary results: size effect plot



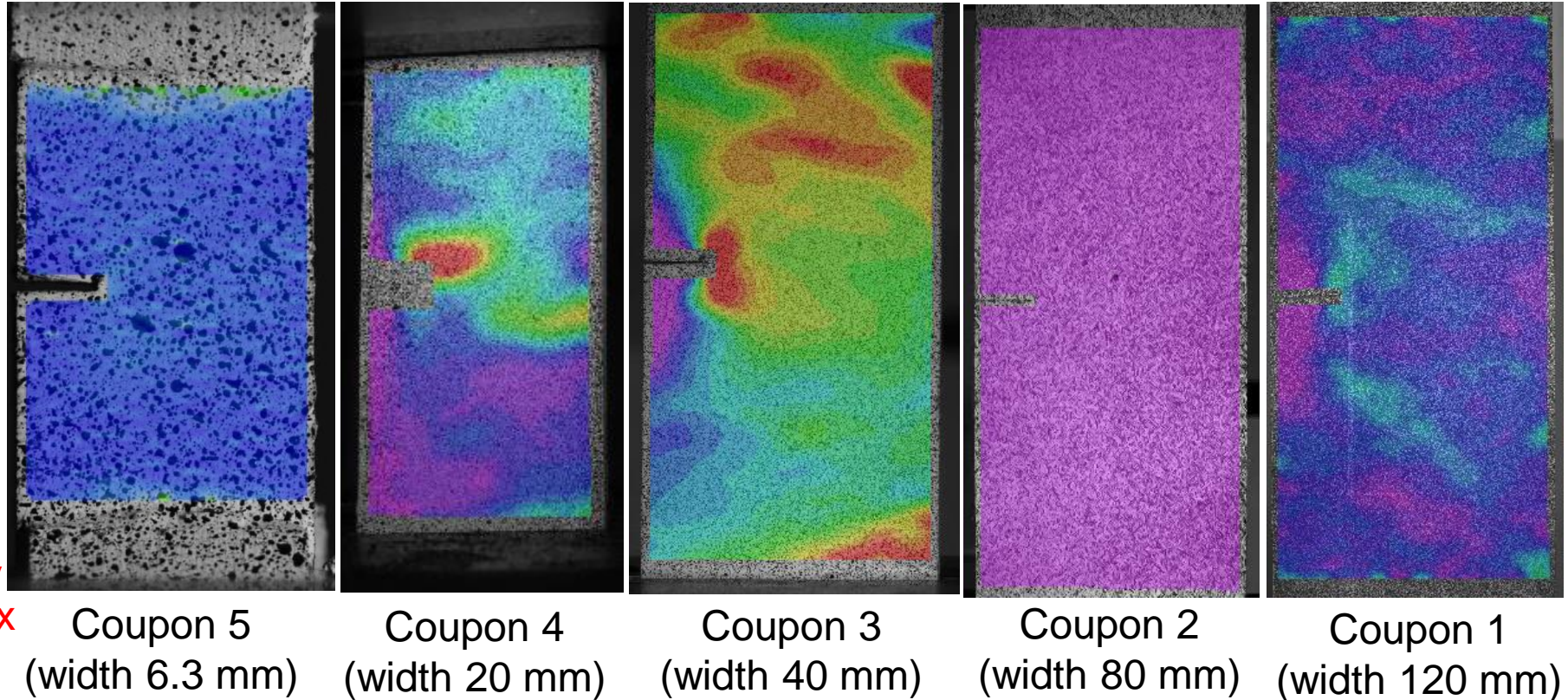
# Preliminary results: 75 x 12 mm platelets



# DIC data for the 75 x 12 mm case

---

Max principal strain





# Size Effect Law

---

Let's define the nominal stress in the specimen as:

$$\sigma_N = P/(tD) \quad \begin{array}{l} P = \text{applied load} \\ t = \text{thickness} \end{array} \quad \begin{array}{l} D = \text{width} \end{array} \quad (1)$$

the following expression holds for the initial fracture energy:

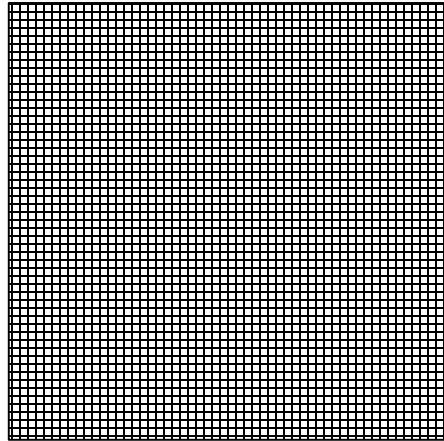
$$G_f(\alpha) = \frac{\sigma_N^2 D}{E^*} g(\alpha) = \frac{\sigma_N^2 D}{E^*} g(\alpha_0 + c_f/D) \quad \begin{array}{l} \alpha = a/D \\ E^* = \text{effective modulus} \\ g = \text{dimensionless energy release rate} \end{array} \quad (2)$$

By expanding  $g$  in Taylor Series, retaining only 1<sup>st</sup> order terms and re-arranging:

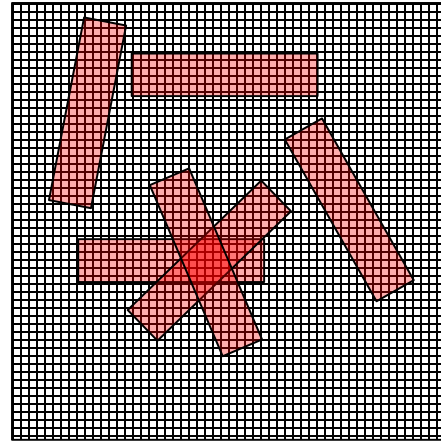
$$\sigma_N = \sqrt{\frac{E^* G_f}{Dg(\alpha_0) + c_f g'(\alpha_0)}}$$

**Bažant's Size Effect Law (SEL)** for quasi-brittle materials (extended to DFCs) (3)

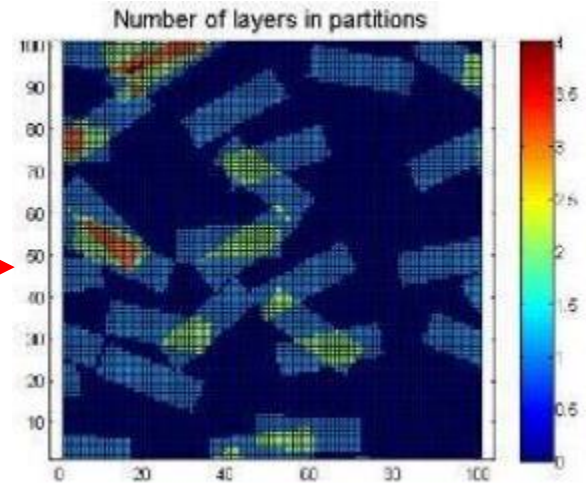
# Calculation of $g$ and $g'$ : microstructure generation



partition generation

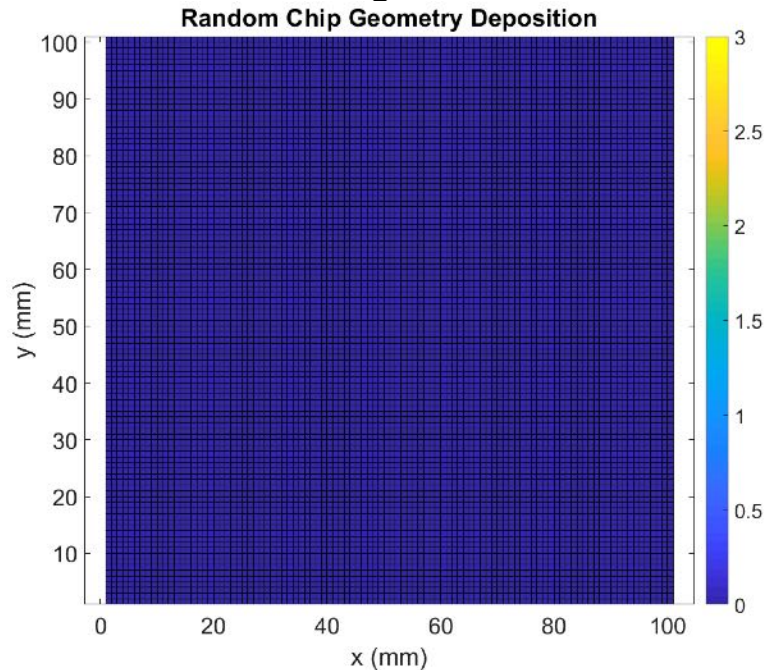


random strand generation

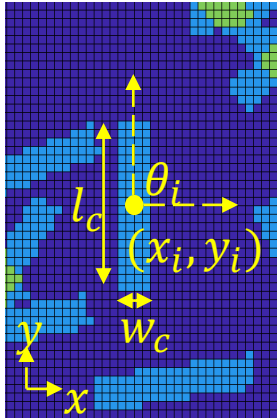


meshing with shell elements

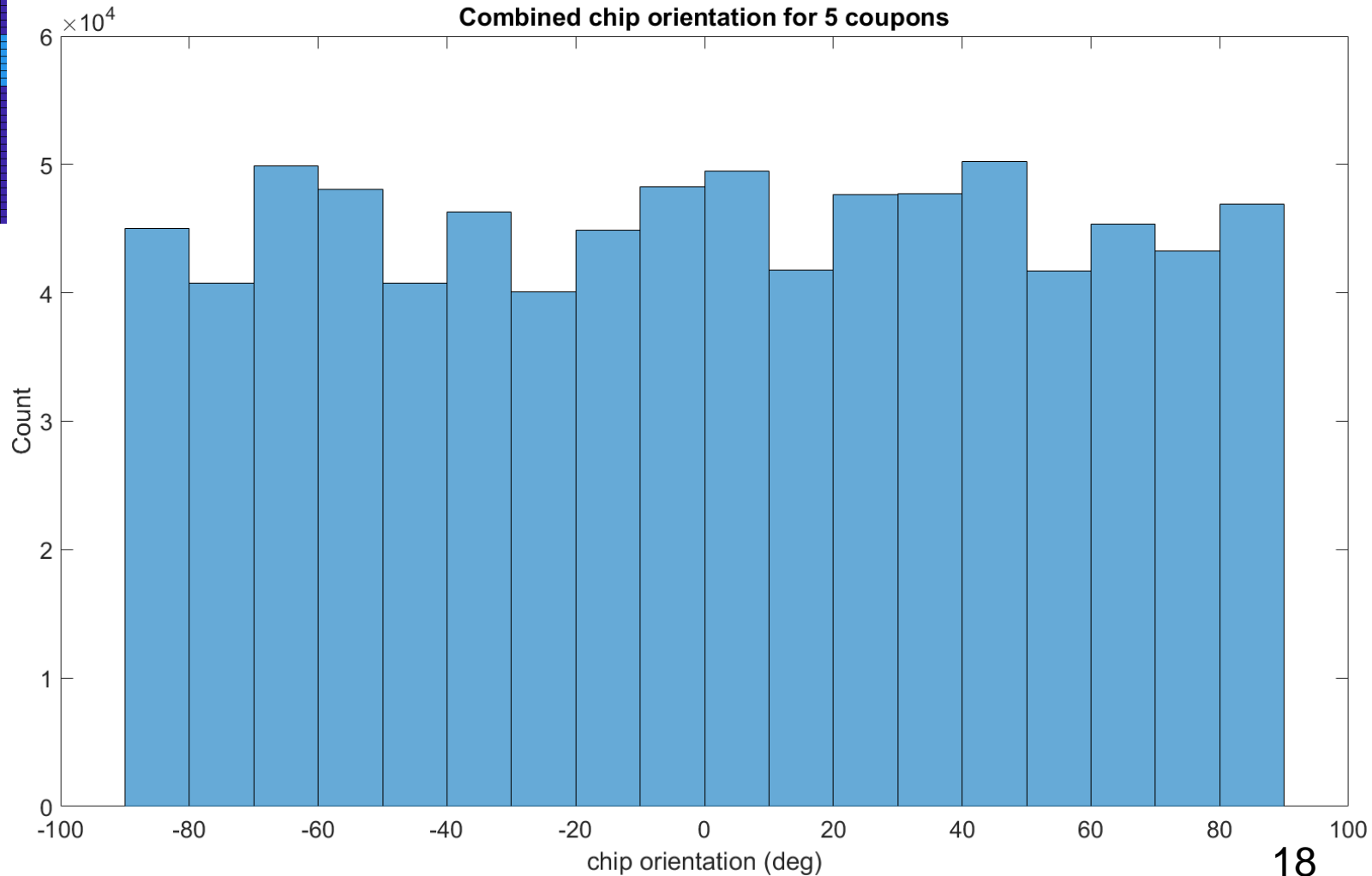
**Example of typical layer distribution**



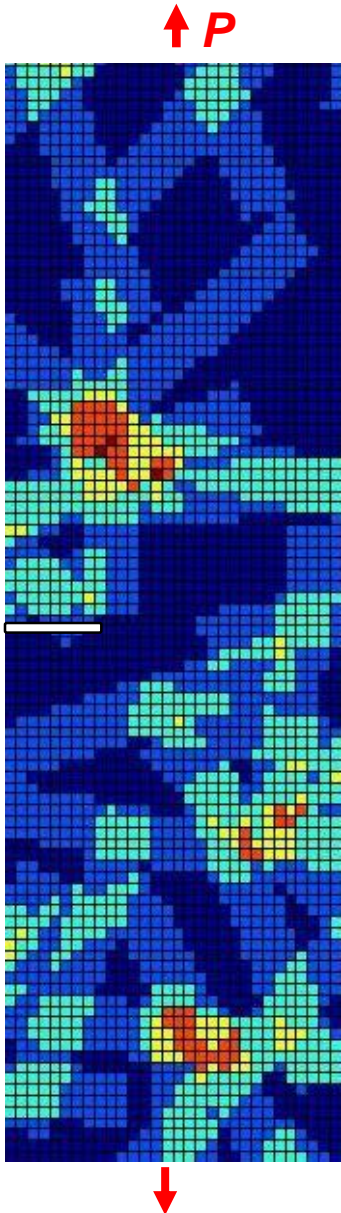
# Platelet orientation distribution



**Uniform or any other distribution can be assumed**



# Calculation of $g$ and $g'$



Let's relate the nominal stress to the energy release rate through a dimensionless function  $g$ :

$$G = \frac{\sigma_N^2 D}{E^*} g(\alpha) \quad \sigma_N = P/(tD) \quad \begin{array}{l} P = \text{applied load} \\ t = \text{thickness} \end{array} \quad D = \text{width}$$

For a given  $P$ ,  $G$  can be calculated by leveraging on its definition:

$$G(P, a) = \frac{1}{t} \left( \frac{\partial \Pi^*(P, a)}{\partial a} \right)_P \approx \frac{1}{t} \frac{\Pi^*(P, a + \delta a/2) - \Pi^*(P, a - \delta a/2)}{\delta a}$$

$\Pi^*$  = total complementary strain energy in the structure

Then  $g$  and  $g'$  can be calculated from  $G$ :

$$g(\alpha) = \frac{GE^*}{\sigma_N^2 D} \quad \alpha = a/D$$

**$g$  accounts both for the geometry and microstructural effects**

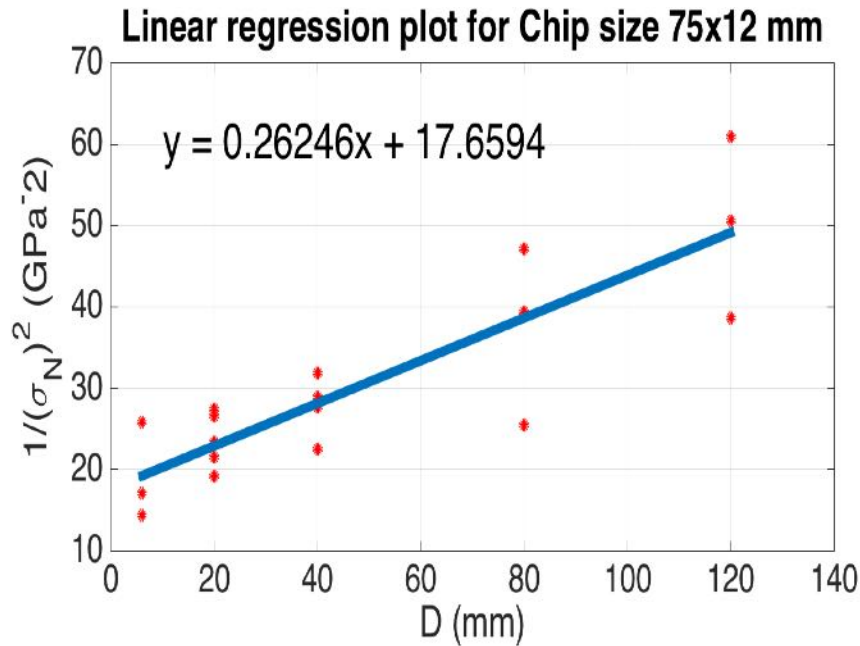
# Estimation of Fracture Energy from Size Effect

## Linear Regression Analysis:

$$\sigma_N = \sqrt{\frac{E^*G_f}{Dg(\alpha_0) + c_f g'(\alpha_0)}}$$



$$\frac{1}{\sigma_{Nc}^2} = \frac{g(\alpha_0)}{EG_f} D + \frac{c_f g'(\alpha_0)}{E^*G_f}$$



$$a_t \approx 10 \text{ mm}$$

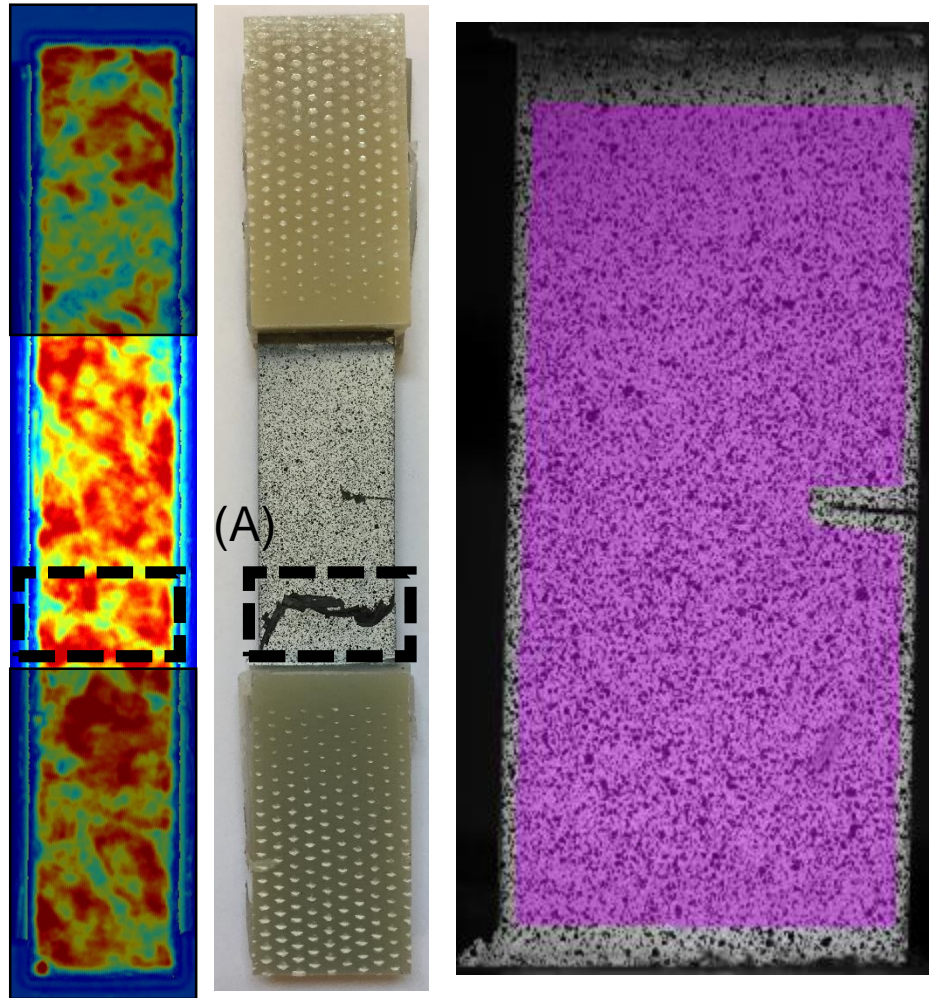
$$G_f \approx 77 \text{ N/mm}$$

**about 9 times larger than Al 7075!**

# Ongoing and Future Work

## Analysis of morphology and fracture analysis

C-Scan

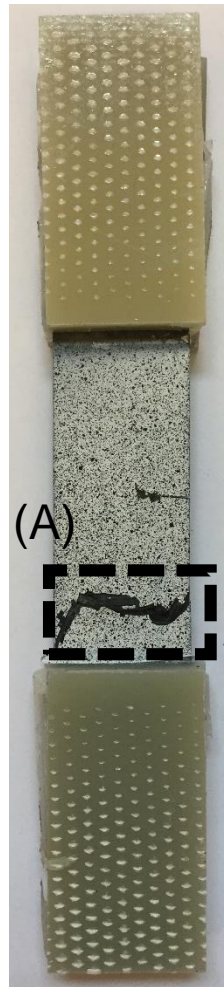


Size 4 (width = 20mm)

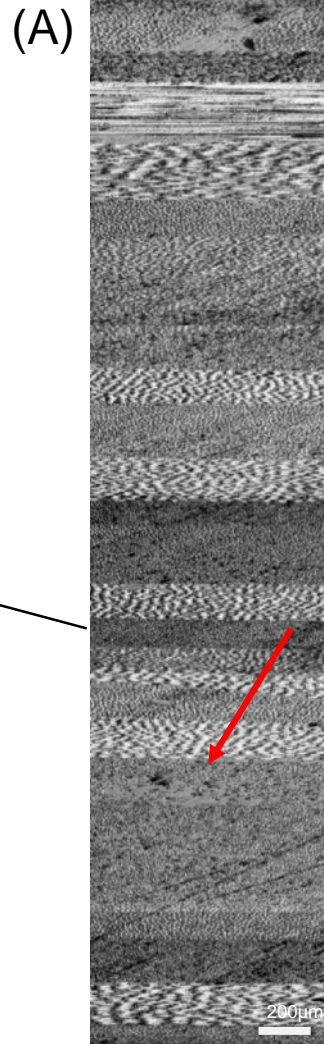
DIC in Eyy

# Ongoing and Future Work

## Analysis of morphology and fracture analysis



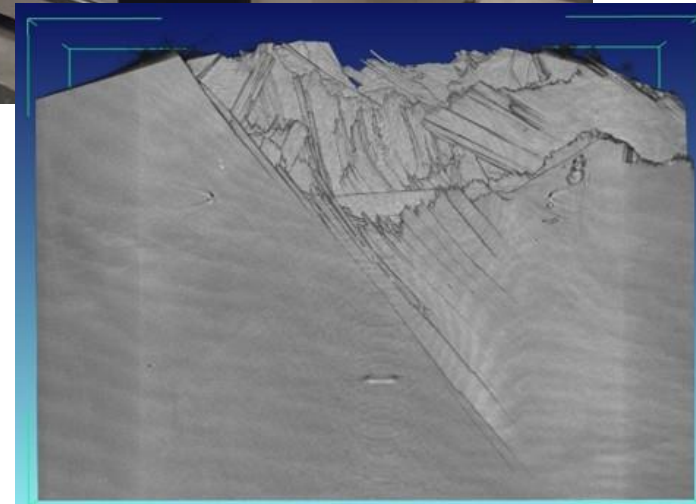
Optical microscope



$\theta$

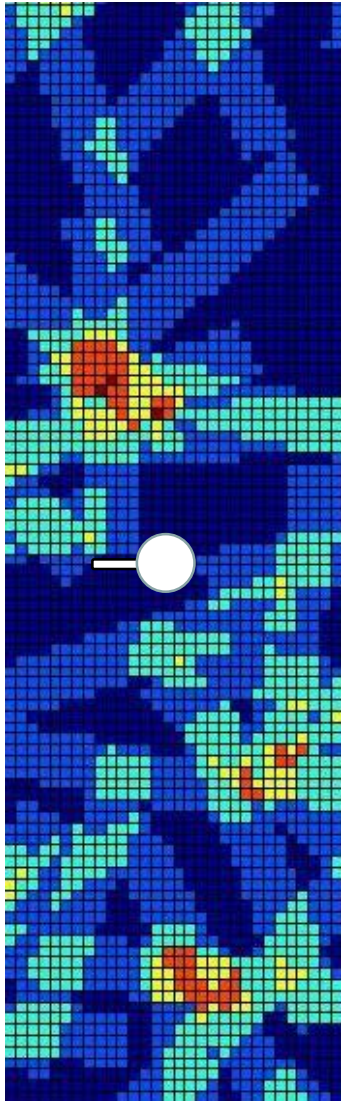
Resin pocket

Micro Computed Tomography



# Ongoing and Future Work

↑  $P$



↓

## Prediction of fracture onset for other configurations

- 1) By Size Effect law with updated  $g$  and  $g'$

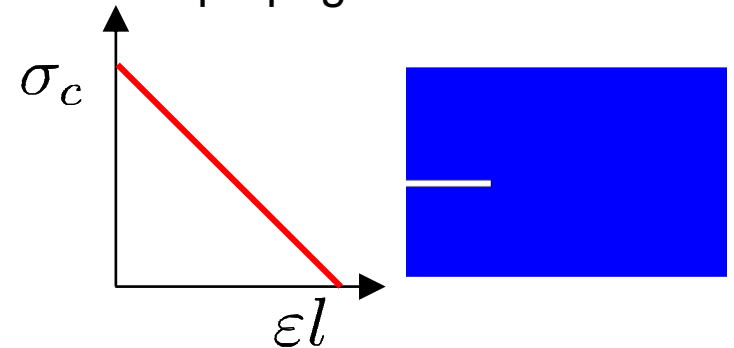
$$\sigma_N = \sqrt{\frac{E^* G_f}{Dg(\alpha_0) + c_f g'(\alpha_0)}}$$

- 2) By Cohesive Zone Modeling of crack propagation

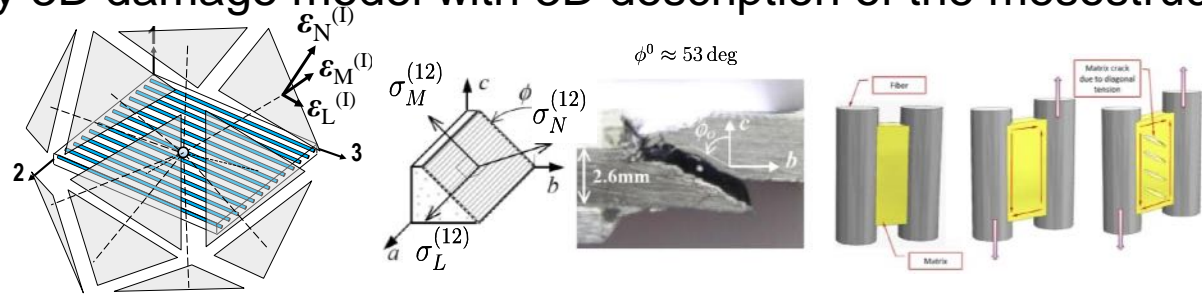
$$G_f = w_f / th$$

$w_f$  = work of fracture

$h$  = element width



- 3) By 3D damage model with 3D description of the mesostructure



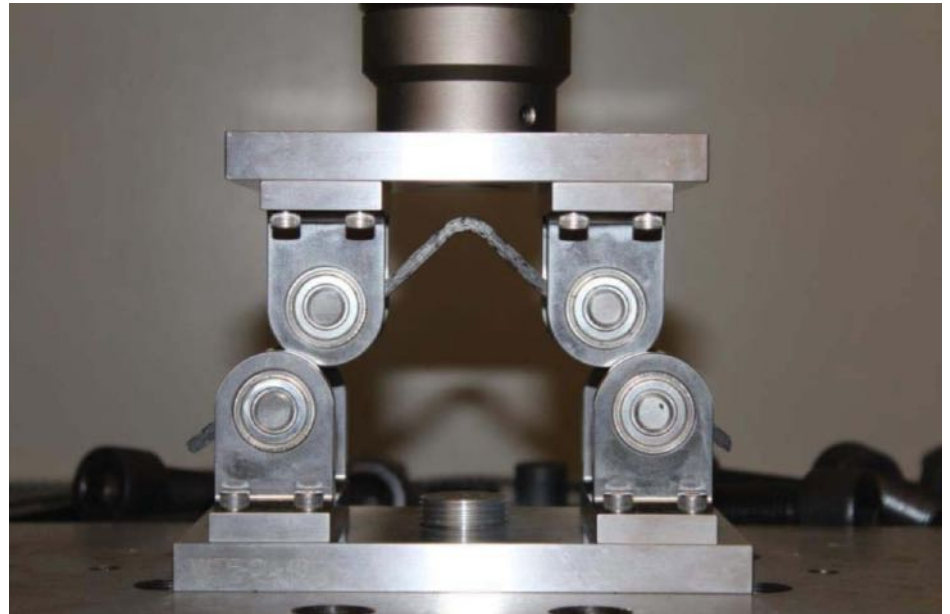
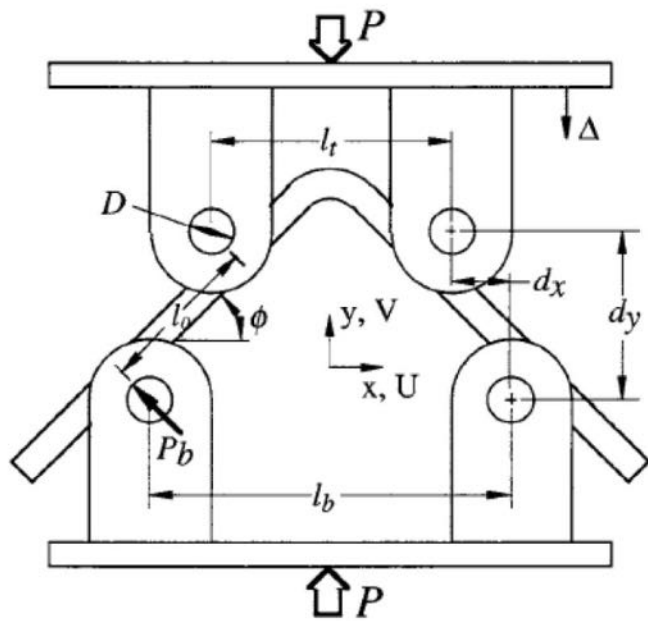


# Ongoing and Future Work

## Analysis of damage in curved beams

- **Curved beam testing**

Comprehensive experimental campaign on curved beam specimens with various thicknesses



# Safety and Certification of Discontinuous Fiber Composite Structures

Marco Salviato, Jinkyu Yang, Mark Tuttle

University of Washington

Seattle, November 8<sup>th</sup> 2017